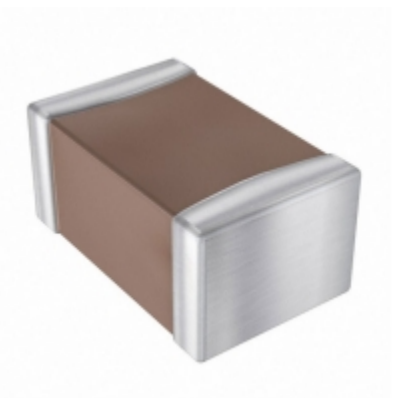


<b>0805YC823KAT4A</b>	
부품 번호	<a href="#">0805YC823KAT4A</a>
제조사	<a href="#">AVX Corporation</a>
기술	CAP CER 0.082UF 16V X7R 0805
가능 수량	500 pcs in stock
데이터 시트	
0805YC823KAT4A Price	<a href="#">온라인으로 가격 및 리드 타임 요청</a> or Email us: <a href="mailto:Info@ariat-tech.com">Info@ariat-tech.com</a>


[견적](#)

0805YC823KAT4A의 기술 정보			
제조업체 부품 번호	<a href="#">0805YC823KAT4A</a>	범주	<a href="#">커패시터</a>
제조사	<a href="#">AVX Corporation</a>	기술	CAP CER 0.082UF 16V X7R 0805
패키지 / 케이스	Tape & Reel (TR)	가능 수량	500
연속	-	전압 - 정격	16V
작동 온도	-55°C ~ 125°C	등급	-
실장 형	Surface Mount, MLCC	크기 / 치수	0.079" L x 0.049" W (2.01mm x 1.25mm)
높이 - 장착 (최대)	-	종모	-
정전 용량	0.082μF	용인	±10%
응용 프로그램	General Purpose	리드 간격	-
패키지 / 케이스	0805 (2012 Metric)	온도 계수	X7R
두께 (최대)	0.037" (0.94mm)	리드 (Lead)	-
고장율	-	포장	Tape & Reel (TR)

0805YC823KAT4A 500 PC 신규 및 기존 재고 있음, 0805YC823KAT4A 재고, 데이터 시트, PDF, 재고를 [Ariat-Tech .com](http://Ariat-Tech.com) 온라인에서 확인하십시오. 주문 [0805YC823KAT4A](#) AVX Corporation 보증 및 신뢰성 있음. RFQ [0805YC823KAT4A](#) : [Info@Ariat-Tech.com](mailto:Info@Ariat-Tech.com)

0805YC823KAT4A 관련 부품				
영상	부품 번호	기술	제조사	수량
	<a href="#">0805YD104KAT2A</a>	CAP CER 0.1UF 16V X5R 0805	AVX Corporation	500 pcs
	<a href="#">0805YC824KAT2A</a>	CAP CER 0.82UF 16V X7R 0805	AVX Corporation	500 pcs
	<a href="#">0805YD105MAT2A</a>	CAP CER 1UF 16V X5R 0805	AVX Corporation	500 pcs
	<a href="#">0805YC823KAT2A</a>	CAP CER 0.082UF 16V X7R 0805	AVX Corporation	500 pcs
	<a href="#">0805YD105MAT4A</a>	CAP CER 1UF 16V X5R 0805	AVX Corporation	500 pcs
	<a href="#">0805YC822KAT2A</a>	CAP CER 8200PF 16V X7R 0805	AVX Corporation	500 pcs
	<a href="#">0805YD102KAT2A</a>	CAP CER 1000PF 16V X5R 0805	AVX Corporation	500 pcs
	<a href="#">0805YC821MAT2A</a>	CAP CER 820PF 16V X7R 0805	AVX Corporation	500 pcs
	<a href="#">0805YC822KAT2A</a>	CAP CER 8200PF 16V X7R 0805	Avago Technologies (Broadcom Limited)	500 pcs
	<a href="#">0805YD104KAT2A</a>	CAP CER 0.1UF 16V X5R 0805	Avago Technologies (Broadcom Limited)	500 pcs
	<a href="#">0805YD105KAT4A</a>	CAP CER 1UF 16V X5R 0805	AVX Corporation	500 pcs
	<a href="#">0805YC823JAT2A</a>	CAP CER 0.082UF 16V X7R 0805	AVX Corporation	500 pcs
	<a href="#">0805YC821KAT2A</a>	CAP CER 820PF 16V X7R 0805	AVX Corporation	500 pcs
	<a href="#">0805YC822MAT2A</a>	CAP CER 8200PF 16V X7R 0805	AVX Corporation	500 pcs
	<a href="#">0805YD105JAT2A</a>	CAP CER 1UF 16V X5R 0805	AVX Corporation	500 pcs
	<a href="#">0805YD105KAT2A</a>	CAP CER 1UF 16V X5R 0805	AVX Corporation	2000 pcs
	<a href="#">0805YD105MA12A</a>	CAP CER 1UF 16V X5R 0805	AVX Corporation	500 pcs
	<a href="#">0805YC823KAT2A</a>	CAP CER 0.082UF 16V X7R 0805	Avago Technologies (Broadcom Limited)	500 pcs
	<a href="#">0805YC822KAT4A</a>	CAP CER 8200PF 16V X7R 0805	AVX Corporation	500 pcs
	<a href="#">0805YC822JAT2A</a>	CAP CER 8200PF 16V X7R 0805	AVX Corporation	500 pcs

IC 칩 및 IGBT 모듈 - 핫 재고 부품 번호				
<a href="#">0805YC563KAT2A</a>	<a href="#">0805YC563KAT4A</a>	<a href="#">0805YC563KAZ2A</a>	<a href="#">0805YC682JAT2A</a>	<a href="#">0805YC682KAT2A</a>
<a href="#">0805YC682KAT2A</a>	<a href="#">0805YC683JAT2A</a>	<a href="#">0805YC683KAJ2A</a>	<a href="#">0805YC683KAT2A</a>	<a href="#">0805YC684JAT2A</a>
<a href="#">0805YC684KAT2A</a>	<a href="#">0805YC684KZ2A</a>	<a href="#">0805YC684KAT2A</a>	<a href="#">0805YC684M4T2A</a>	<a href="#">0805YC684M4T2A</a>
<a href="#">0805YC821KAT2A</a>	<a href="#">0805YC821MAT2A</a>	<a href="#">0805YC822JAT2A</a>	<a href="#">0805YC822KAT2A</a>	<a href="#">0805YC822KAT2A</a>
<a href="#">0805YC822KAT4A</a>	<a href="#">0805YC822MAT2A</a>	<a href="#">0805YC823JAT2A</a>	<a href="#">0805YC823KAT2A</a>	<a href="#">0805YC823KAT2A</a>
<a href="#">0805YC824KAT2A</a>	<a href="#">0805YD102KAT2A</a>	<a href="#">0805YD104KAT2A</a>	<a href="#">0805YD104KAT2A</a>	<a href="#">0805YD105JAT2A</a>
<a href="#">0805YD105KAT2A</a>	<a href="#">0805YD105MA12A</a>	<a href="#">0805YD105MAT2A</a>	<a href="#">0805YD105MAT4A</a>	<a href="#">0805YD106KAT2A</a>
<a href="#">0805YD106MAT2A</a>	<a href="#">0805YD184MAT2A</a>	<a href="#">0805YD225KAT2A</a>	<a href="#">0805YD225MAT2A</a>	<a href="#">0805YD334KAT2A</a>
<a href="#">0805YD334KAT2A</a>	<a href="#">0805YD474KAT2A</a>	<a href="#">0805YD474KAT2A</a>	<a href="#">0805YD474KAT4A</a>	<a href="#">0805YD474MAT2A</a>
<a href="#">0805YD475KAT2A</a>	<a href="#">0805YD475MAT2A</a>	<a href="#">0805YD684KAT2A</a>	<a href="#">0805YD684MAT2A</a>	<a href="#">0805YD824MAT2A</a>